

Accessibility Guide for Blackshaw Moor Caravan & Motorhome Club Site

Contact for Accessibility Enquiries: Please ask for the Duty Manager

✉ blackshawmoor@camc.com

☎ 01538 300203

🌐 <https://www.caravanclub.co.uk/club-sites/england/peak-district/staffordshire/blackshaw-moor-caravan-club-site/>

At a Glance

Level Access

- The site has a very steep hill connecting the top and bottom parts of the site, but there is level access to all facilities in the Lower Toilet Block

Step only Access

- The dog walk, while step free, is over woodchipping and can be uneven
- The play area can only be accessed via grass or gravel from the Upper Toilet Block

Accessible Toilets and Showers

- There is a combined accessible toilet and shower cubicle in the lower toilet block

Accessible Pitches

- No designated accessible pitches, however pitches are allocated according to your needs or preference, so please contact us in advance to discuss your requirements.



We support the Hidden Disabilities Scheme

- Our organisation supports the Hidden Disabilities Scheme, lanyards and pins are available in reception

Site Address

Blackshaw Moor Caravan Club Site
Leek,
Staffordshire,
ST13 8TW

Arrival and Reception

Approach Route

- Access onto the site is via a tarmac driveway
- The reception building is on the left hand side when you enter the site
- The gate from the road is left open at all times but access into the site is controlled via a vehicle barrier controlled by card access.
- The ground is level in this area with hard surfaced paths linking facilities.

Parking

- A new arrival bay is set within a few metres of the Reception building.
- There are no visitor parking bays on site
- There are no late night arrival bays

Entrance into Reception

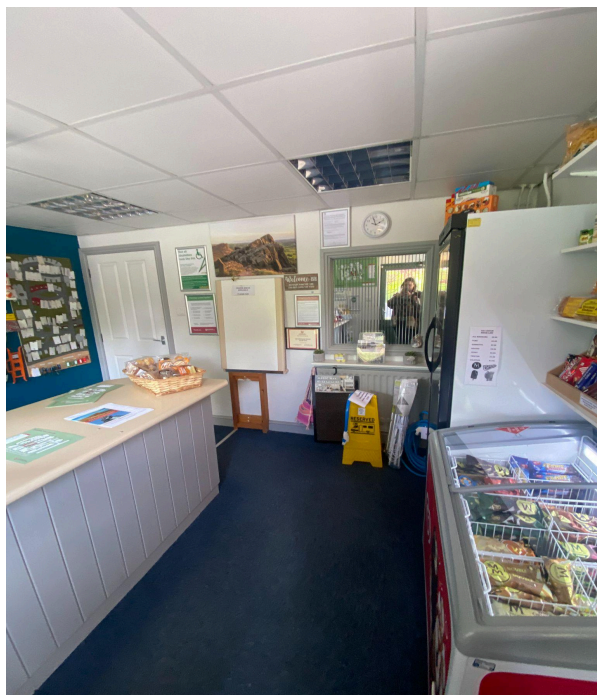
- There is a 900mm wide ramp with a single handrail to give access to the reception
- There is an alternative stepped approach with a single handrail
- There is an additional ramp which is more shallow and with no handrail to access the reception
- The Entrance door is 800mm wide, over a level threshold
- The entrance door is not power assisted, and opens inwards
- A call bell is available to summon assistance, this is 1200mm above ground level



Reception and Toilet Block

Reception

- There is approximately 1250mm x 2900mm turning space, clear of the desk and furniture
- The reception desk is set 900mm above the floor, with a dropped section at 750mm
- The desk is not fitted with a hearing loop



Getting around the Site

- The site slopes upwards from the entrance, towards the east, with the slopes being steeper towards the upper toilet block
- Pedestrians share vehicles routes which are well maintained tarmac, but do incorporate speed bumps

Pitches

- There are 89 pitches on site, all of which are hardstanding
- Temporary accessibility rubber matting is not provided
- There are no designated accessible pitches, however pitches can be allocated according to your needs or preference, so please contact us in advance to discuss your requirements.
- There are 6 pitches on a level section, which are within 45 metres of the lower toilet block and reception
- There are 8 pitches on a level section, which are within 35 metres of the upper toilet block

Toilets and Changing Facilities

Accessible Toilets and Bathing Facilities – Lower Toilet Block

- A combined Accessible Toilet and Shower cubicle is located in the Lower Toilet Block which is set to the west of the site, near the entrance
- The toilet block is accessed via a ramped path with a single handrail or an alternative stepped approach
- The door is 800mm wide, over a level threshold and opens outwards
- The cubicle door is secured by RADAR key. A key can be borrowed from Reception
- The cubicle's overall dimensions are 3600mm x 2200mm
- The WC pan is right hand transfer.
- The shower seat is right hand transfer
- The toilet seat is 450mm, and the shower seat is 460mm above the floor level
- The clear space to the side of the toilet is 1500mm wide
- The cubicle is fitted with a pull cord alarm, which is tested frequently
- The shower seat and WC Pan are fitted with grab rails to assist transfer

- Shower controls are 1000mm high
- The shower head is fitted on a sliding rail, which is a minimum of 900mm above floor level
- The basin taps and shower controls are fitted with levers



Standard Toilets and Washrooms

- There are two toilet and shower blocks, the lower toilet block is combined with the reception building on the west of the site and the upper toilet block is on the east of the site
- Parking is available next to the upper Toilet Block
- Entrance doors to the lower toilet block are accessed by a ramp, or a stepped approach
- The entrance doors to the upper toilet block are accessed by a dropped kerb
- The female area to the Lower Toilet Block has 4 WC cubicles, 3 Shower cubicles and 3 Washbasin Privacy cubicles
- The male area to the Lower Toilet Block has 4 WC cubicles, 3 Urinals including 1 lower urinal, 3 Shower cubicles and 3 Washbasin Privacy cubicles
- The female area to the Upper Toilet Block has 3 WC cubicles, 2 Shower cubicles and 3 Washbasin Privacy cubicles
- The male area to the Upper Toilet Block has 3 WC cubicles, 2 Urinals including 1 lower urinal, 2 Shower cubicles and 2 Washbasin Privacy cubicles

- The male and the female areas have a modified WC cubicle, a modified Shower cubicle and a modified Washbasin Privacy cubicle, with grab rails to assist mobility
- Taps in each block incorporate lever controls



Ramp to Lower Toilet Block

Baby and Toddler Room - Lower Toilet Block

- The baby and toddler room can be accessed via the ramp or via the steps
- The door is 800mm wide over a level threshold and opens inwards
- There is 1600mm x 2100mm circulation space within the room
- There is a low WC at 330mm high
- There is a half size bath tub with a shower above, with thumb turn taps to operate
- There is a fixed baby changing bench at 750mm high
- The basin has lever taps to operate



Other Facilities

Dishwashing – Lower Toilet Block

- There is access via the ramp or the steps
- The door opens to 800mm wide with a level threshold and opens outwards
- There is 1150mm x 2550mm in front of the sinks
- There are 2 sinks at 900mm high work surface with no knee space underneath
- Lever taps available



Dishwashing – Upper Toilet Block

- Level approach via paved area
- The door opens to 900mm, over a level threshold and opens outwards
- There is 800mm x 3000mm in front of the sinks
- There are 3 sinks at 850mm high work surface with no knee space underneath
- Lever taps available



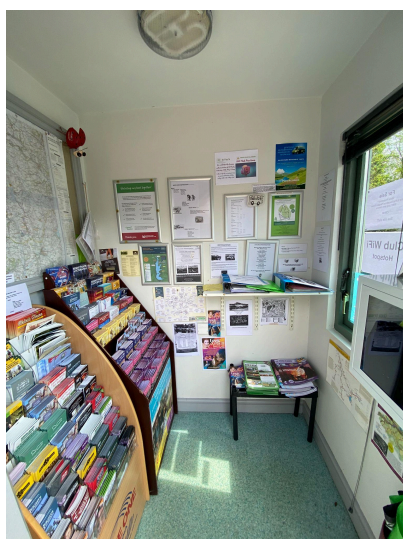
Laundry – Lower Toilet Block

- Access via the ramp or steps
- The door is 800mm wide over a level threshold and opens outwards
- There is 2400mm x 1650mm clear space
- There is 1 front loading washing machines and 1 front loading tumble dryer
- There are 2 sinks at 890mm high with no knee space below
- There are lever taps available



Information Room – Adjacent to Reception

- Access via the ramp or the steps
- The door is 800mm wide over a level threshold and opens outwards
- The room's dimensions are 1050mm x 1050mm
- Information is displayed between 500mm and 1400mm high



Play Area

- There is a play area adjacent to the upper toilet block
- There is a gravel pathway to access the play area from the toilet block
- The gate is 850mm wide
- The play equipment is mounted on safety flooring



Dog Walk

- There is a dog walk pathway a short distance from the new arrivals area
- The access road leads to a grassed and wood chipping pathway
- The walk leads through a wooded area



Service Points

- There are Service Points at intervals around the site, please check the site map for details
- All of the service points are on concrete settings which are flush with the road
- The paths around the Service Points can be as narrow as 750mm wide
- The water taps are at a maximum of 800mm high, with cross head taps
- Chemical Emptying Points can be found here too with taps at 850mm



Motorhome Service Point

- There is one Motorhome Service Point on site, located close to the reception
- The taps are 770mm high mounted on a 120mm high kerb



Information

Written Information

- A range of leaflets for local attractions are available in the Information Room.
- Please ask at reception if you have difficulty reading third party leaflets and staff will be happy to read these to you upon request

Customer Care & Support

Booking Procedures

- If you have any specific requirements for your stay please contact the site directly and they will be happy to discuss your requirements and reserve you the most suitable pitch wherever possible.

Evacuation

- There is an assembly point at the entrance of the site in the event of an emergency
- Please ask at reception for more details

Customer Care and Staff Training

- All on site staff have received disability awareness and etiquette training.

Public Transport

- There is a limited bus service, which runs from just outside of the site, which goes to Leek or Buxton every 3 hours

Taxi

- Please contact the site who keep a list of local taxi companies including those offering a wheelchair accessible service where available.