

# Let's Go Jayco Excursion

## 5 berth Motorhome

The Jayco Excursion 5-Berth Motorhome offers the ultimate blend of space, comfort, and convenience, making it perfect for families or groups seeking adventure on the open road. With room to sleep up to five people, modern amenities, and a thoughtfully designed interior, it's your home on wheels for unforgettable adventures. Experience the freedom to travel with all the comforts of home, wherever the road takes you.



### What's included with the Let's Go Excursion

- Kitchen equipment
- Linen and bedding (including pillows, pillowcases, duvet, sheet and towels)
- Crockery & Glassware
- Cutlery
- Hygiene & Housekeeping
- Outdoor Living
- Safety Equipment

#### Optional Extras

- GPS
- Max 2 child restraints can be fitted
- Max 2 booster seats can be fitted
- Bike Rack
- Bike Hire



## Vehicle Specifications

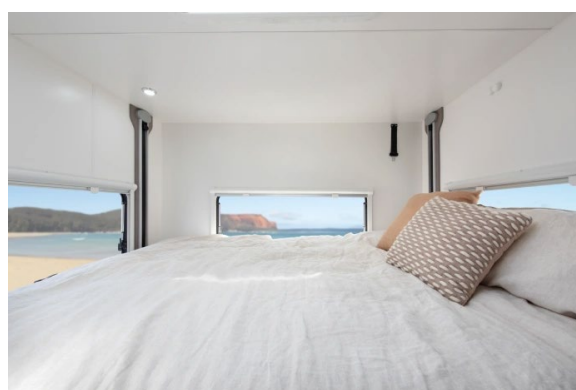
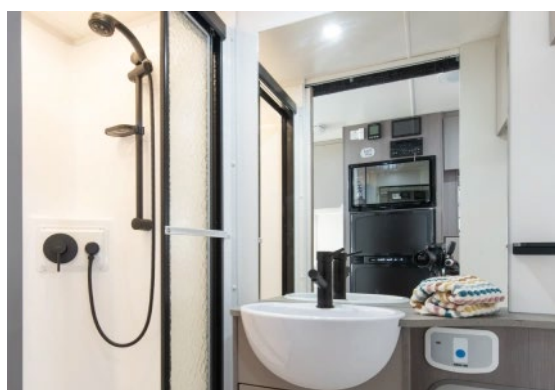
- Vehicle make: VW Crafter
- Engine: 2.L Diesel
- Automatic
- Max Passengers:5
- Reversing camera
- Air-conditioning
- Fuel tank capacity: 75L
- Fuel Consumption: 14-16L/100kms
- Fresh water tank: 80L
- Grey water tank: 100L
- 2/3 seatbelts front / Rear
- Power supply: 240v mains/12v battery/solar
- Fridge/freezer: 171L
- Microwave
- Sink
- 3 Burner stove
- Awning
- Radio and CD player
- Fire Extinguisher
- DVD player with TV
- Toilet
- Shower
- TV Antenna
- Flyscreens
- Walkthrough

## Sleeping for up to 5 Adults

- Double Bed (Convertible Dinette) - 2.23m x 1.43m
- Double Bed (Drop Down) - 2.23m x 1.43m
- Double Bed (Over Drivers Cab) - 2.23m x 1.43m

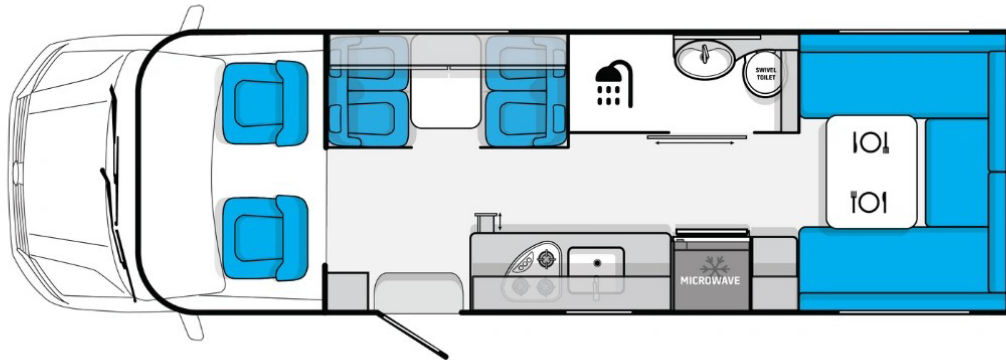
## Vehicle Dimensions

- Length – 8.97m
- Width (excluding Awning)– 2.396m
- Height (Including A/C)– 3.23m
- Interior Height – 2.1m

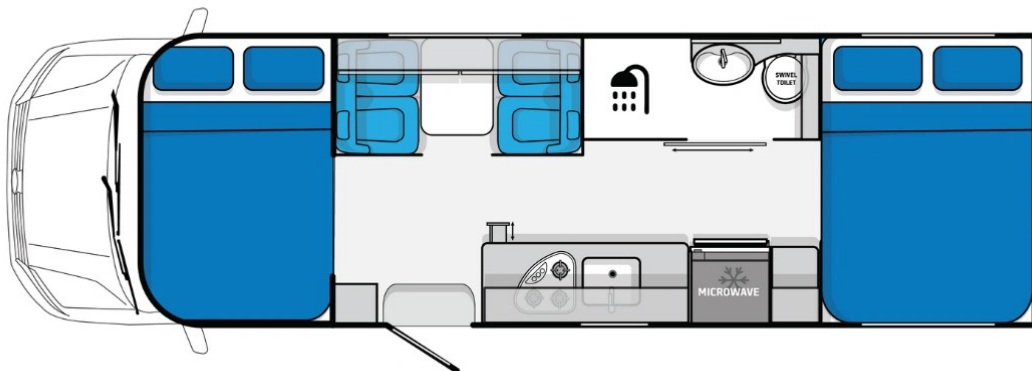


## Let's Go Excursion Floorplans

Day



Night



Floor plans and specifications are intended as a guide and Let's Go cannot guarantee exact specifications and layouts.

Available on all independent and tailor-made holidays in Australia.