

Contact for Accessibility Enquiries: Please ask for the Duty Manager

✉ balbirniepark@camc.com

☎ 01592 759130

🌐 [camc.com/club-sites/scotland/fife/balbirnie-park-club-campsite/](http://camc.com/club-sites/scotland/fife/balbirnie-park-club-campsite/)

## At a Glance

### **Level Access**

- The site slopes throughout, with multiple levels and an upwards slope from the entrance to the reception and then to the toilet block

### **Step only Access**

- Reception
- Dishwashing Room
- Laundry Room
- Baby and Toddler Room
- Information Room
- Some Service Points

### **Accessible Toilets and Showers**

- There is a combined accessible toilet and shower cubicle in the toilet block

### **Accessible Pitches**

- No designated accessible pitches, however pitches are allocated according to your needs or preference, so please contact us in advance to discuss your requirements.



### **We support the Hidden Disabilities Scheme**

- Our organisation supports the Hidden Disabilities Scheme, lanyards and pins are available in reception

## **Site Address**

Balbirnie Park Club Campsite  
Glenrothes,  
Fife,  
KY7 6NR,  
Scotland

## **Arrival and Reception**

### **Approach Route**

- Access onto the site is via a tarmac driveway
- The reception building is on the left hand side when you enter the site
- The gate from the road is left open at all times but access into the site is controlled via a vehicle barrier controlled by card access.
- The ground is sloping in this area with hard surfaced ground linking facilities.

### **Parking**

- A new arrival bay is set within a few metres of the Reception building.
- There is space for 4 cars to park opposite Reception, however there are no marked bays or disabled bays.
- There is 1 late night arrival bay

### **Entrance into Reception**

- There are 5 steps, which range between 90mm and 170mm in depth to access the reception
- The Entrance door is 700mm wide, with a 110mm step in
- The entrance door is not power assisted, and opens outwards
- A call bell is available to summon assistance, this is 1000mm high, next to the door



## Reception

- There is approximately 1300mm x 2450mm turning space, clear of the desk and furniture
- The reception desk is set 900mm above the floor with no dropped section
- The desk is not fitted with a hearing loop



## Getting around the Site

- The site slopes throughout
- Pedestrians share vehicles routes which are well maintained tarmac, but do incorporate speed bumps

## Pitches

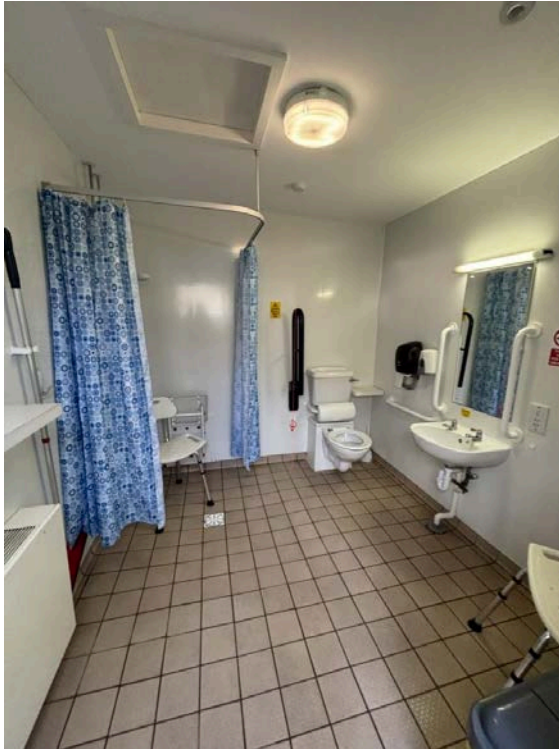
- There are 81 pitches on site, 60 of which are hardstanding
- Temporary multipurpose access rubber matting is not provided

- There are no designated accessible pitches, however pitches are allocated according to your needs or preference, so please contact us in advance to discuss your requirements.

## **Toilets and Changing Facilities**

### **Accessible Toilets and Bathing facilities – Toilet Block**

- A combined Accessible Toilet and Shower cubicle is located in the Toilet Block which is set to the west of the site.
- The toilet block is accessed via a sloped path from the roadway
- The door is 850mm wide, over a level threshold and opens outwards
- The cubicle door is secured by RADAR key. A key can be borrowed from Reception
- The cubicle's overall dimensions are 2400mm x 2800mm
- The WC pan is left hand transfer.
- The shower seat is right hand transfer
- The toilet seat is 450mm, and the shower seat is 500mm above the floor level
- The clear space to the side of the toilet is 1000mm wide
- The cubicle is fitted with a pull cord alarm, which is tested frequently
- The shower seat and WC Pan are fitted with grab rails to assist transfer
- Shower controls are 1000mm high
- The shower head is fitted on a sliding rail, which is a minimum of 1450mm above floor level
- The basin taps and shower controls are fitted with levers



### **Standard Toilets and Washrooms**

- There is one toilet and shower blocks to the west of the site
- Entrance doors are accessed by a paved area, which is accessed via a sloped path from the adjacent roadway
- The doors to both the male and female facilities are 750mm wide, over a level threshold and open inwards with a keypad at 1500mm high
- The female area has 6 WC cubicles, 5 Shower cubicles and 3 Washbasin Privacy cubicles
- The male area has 6 WC cubicles, 3 Urinals, 5 Shower cubicles and 3 Washbasin Privacy cubicles
- Both the female and male areas have a modified WC cubicle, a modified Shower cubicle and a modified Washbasin Privacy cubicle with grab rails to assist mobility
- Taps in each area incorporate lever controls



### Baby and Toddler Room - Toilet Block

- There is a baby and toddler room at the toilet block
- The door is 650mm wide over an 80mm step, and opens outwards
- The room's dimensions are 1600mm x 120mm
- There is a half bath with a shower above, and twist turn taps to operate
- There is a drop down baby change unit at 1000mm high
- There is a WC which is 430mm above the floor level
- The basin has lever taps



Baby and Toddler Room

## **Other Facilities**

### **Dishwashing – Toilet Block**

- There is access via the sloped path from the roadway
- Double doors open outwards to 850mm each side, over a 70mm step
- There is 700mm x 3600mm clear space in front of the sinks
- There are 3 sinks within an 850mm high worksurface with 650mm kneespace underneath
- Lever taps available



### **Laundry – Toilet Block**

- There is access from the path around the toilet block
- The door is 750mm wide over an 80mm step, and opens inwards
- There is 1800mm x 2200mm clear space within the room
- There is 1 front loading washing machine and 1 front loading tumble dryer
- 1 sink at 900mm high with no knee space below
- Lever taps fitted



### **Information Room – Adjacent to Reception**

- Access via the tarmaced area around reception
- There is a 140mm step into the door
- The door is 700mm wide and opens outwards
- The room's dimensions are 1450mm x 1850mm
- Information is displayed on shelves between 700mm and 1100mm high



### **Service Points**

- There are three Service Points around the site, please check the site map for details
- All of the service points are on raised concrete settings, with access via gravel or a 40mm step, there is one service point with sloped access

- The paths around the Service Points can be as narrow as 950mm wide
- The water taps are at a maximum of 900mm high, with cross head taps
- Chemical Emptying Points can be found here too, with taps at 1000mm high



### **Motorhome Service Point**

- There is one Motorhome Service Point on site, located close to the toilet block
- The Motorhome Service Point needs to be reversed into to use
- The taps here are 1100mm high



### **Recycling & Waste Area**

- This site has a single waste and recycling area, please consult the Site Map for its specific location. If you have any concerns or questions please discuss with the site team during your stay.

## **Information**

### **Written Information**

- A range of leaflets for local attractions are available in the Information Room.
- Please ask at reception if you have difficulty reading third party leaflets and staff will be happy to read these to you upon request

## **Customer Care & Support**

### **Booking Procedures**

- If you have any specific requirements for your stay please contact the site directly and they will be happy to discuss your requirements and reserve you the most suitable pitch wherever possible.

### **Evacuation**

- There is an assembly point opposite reception in the event of an emergency
- Please ask at reception for more details

### **Customer Care and Staff Training**

- All on site staff have received disability awareness and etiquette training.

### **Public Transport**

- The railway station is a 15 minute walk from the site, with direct links to Edinburgh, Dundee and Perth.
- The bus also stops directly outside the site making access to the local area easy.

### **Taxi**

- Please contact the site who keep a list of local taxi companies including those offering a wheelchair accessible service where available.