

Contact for Accessibility Enquiries: Please ask for the Duty Manager

✉ broadway@camc.com

☎ 01386 858786

🌐 <https://www.caravanclub.co.uk/club-sites/england/cotswolds/worcestershire/broadway-caravan-club-site/>

At a Glance

Level Access

- The site is set on various levels throughout, some slopes are steep throughout

Step only Access

- The Toilet Block in the “Old Railway Goods Store” has step only access

Accessible Toilets and Showers

- There is a combined accessible toilet and shower cubicle in the main toilet block.

Accessible Pitches

- No designated accessible pitches, however pitches are allocated according to your needs or preference, so please contact us in advance to discuss your requirements.



We support the Hidden Disabilities Scheme

- Our organisation supports the Hidden Disabilities Scheme, lanyards and pins are available in reception



We are Dementia Friendly

- Our organisation has been Dementia Friendly since 2025



Relay UK

- Our contact centre in East Grinstead supports Relay UK from BT

Site Address

Broadway Caravan Club Site
Station Road,
Broadway,
Worcestershire,
WR12 7DH

Arrival and Reception

Approach Route

- Access onto the site is via a tarmac driveway
- The reception building is on the left hand side when you enter the site
- The gate from the road is left open at all times but access into the site is controlled via a vehicle barrier controlled by card access.
- The ground is level in this area with hard surfaced paths linking facilities.

Parking

- A new arrival bay is set within a few metres of the Reception building.
- There is space for 11 cars to park opposite Reception, however there are no marked bays or disabled bays. The parking is approximately 20 metres from reception.
- This space is also used for up to 2 Late Night Arrivals

Entrance into Reception

- Reception is accessed via a dropped kerb, and up a slight ramp to a covered level area
- The entrance door is 900mm wide over a level threshold
- The entrance door is not power assisted, and opens inwards
- A call bell is available to summon assistance, this is 1100mm above ground level



Entrance to reception

Reception

- There is approximately 4200mm x 2500mm turning space, clear of the desk and furniture
- The reception desk is set 915mm above the floor and incorporates a dropped section of the counter at 750mm high
- The desk is not fitted with a hearing loop



Getting around the Site

- The site is on various levels throughout, and some access roads can be very steep (up to 1:10)
- There are several paths throughout the site, some of which are steep and incorporate steps with handrails
- Pedestrians share vehicles routes which are well maintained tarmac, but do incorporate speed bumps

Pitches

- There are 117 pitches on site, 112 of which are hardstanding
- Roll out mats are not provided
- There are no designated accessible pitches, however pitches are allocated according to your needs or preference, so please contact us in advance to discuss your requirements.
- There are 3 hardstanding pitches (44, 45, 46) that are between 5 and 20 metres from the main toilet block on a level route, and 150 metres from reception, with some steep areas on route

Toilets and Changing Facilities

Accessible Toilets and Bathing facilities – Main Toilet Block

- A combined Accessible Toilet and Shower cubicle is located in the Main Toilet Block, which is in the middle of the site, on a lower level to reception.
- The toilet block is accessed via a raised paved area, which can be accessed via dropped kerbs
- The door is 890mm wide, over a level threshold and opens outwards
- The cubicle door is secured by RADAR key. A key can be borrowed from Reception
- The cubicle's overall dimensions are 2500mm x 2400mm
- The WC pan is left hand transfer.
- The shower seat is right hand transfer
- The toilet seat is 480mm, however there is no drop down shower seat. There is a moveable shower chair available.

- The clear space to the side of the toilet is 1200mm wide
- The cubicle is fitted with a pull cord alarm, which is tested frequently
- The shower seat and WC Pan are fitted with grab rails to assist transfer
- Shower controls are 1000mm high
- The shower head is fitted on a sliding rail, which is a minimum of 1200mm above floor level
- The basin taps and shower controls are fitted with levers



Standard Toilets and Washrooms

- There are two Toilet Blocks on site, the Main Toilet Block is in the middle of the site. There is also a Toilet Block in the Old Railway Goods Store at the top of the site.
- The Toilet Block in the Old Railway Goods Store is not accessible for anybody with any mobility issues. It can be accessed by 12 150mm steps up to the level with the Toilet Block on, with hand rails on either side or a 250 metre tarmac road from reception. There are steep steps into the Toilet Block or a cobbled entrance.
- There is parking available for up to 3 cars, outside of the Main Toilet Block.
- There is a set of steps with handrails behind the Main Toilet Block.
- The Main Toilet Block is a building surrounded by a raised paved area with concrete paving slabs. This is 1200mm wide with dropped kerbs to access.

- Entrance doors to the Male and Female toilets in the Main Toilet Block are 790mm wide over level thresholds.
- The female area in the main toilet block has 6 WC cubicles, 5 Shower cubicles and 6 Privacy Washbasin cubicles.
- The male area in the main toilet block has 4 Urinals, including 1 lowered Urinal, 4 WC cubicles, 5 Shower cubicles and 6 Privacy Washbasin cubicles
- The female area in the Old Railway Goods Store has 2 WC cubicles, 2 Shower cubicles and 1 Privacy Cubicle
- The male area in the Old Railway Goods Store has 2 Urinals, 3 WC cubicles and 2 Shower cubicles
- There is a modified WC Cubicle and Shower Cubicle with grab rails to assist mobility in the Male and Female toilets in the main toilet block.
- Taps in each block incorporate lever controls



Main Toilet Block



Baby and Toddler Washroom

- The Baby and Toddler Washroom is in the Main Toilet Block, accessed via the external pathway
- There is an inward opening door, which is 750mm wide over a level threshold which can be stiff to open
- A key is needed to open the door, which can be borrowed from reception
- The rooms overall dimensions are 2000mm x 2500mm
- There is a lowered WC at 330mm
- There is a Half Sized Bathtub with a shower over the top, with twist turn taps to operate
- There is a drop down baby changing table at 900mm high
- There are lever taps to operate the basin



Other Facilities

Dishwashing – Main Toilet Block

- Level approach via the paved area
- There is an inward opening door that is 790mm wide, over a level threshold which can be stiff to open
- The room's dimensions are 2500mm x 2300mm
- There are 3 sinks at 810mm high with 540mm kneespace and 1 sink at 600mm high with 540mm kneespace
- There are thumb turn taps to the sinks



Laundry – Main Toilet Block

- Level access via the paved area
- The door opens inwards and is 800mm wide, over a weather strip threshold
- The rooms dimensions are 2600mm x 2300mm
- There is one front loading washing machine, one top loading washing machine and one tumble dryer
- The coin slots to these machines are 1000mm high
- There are 2 sinks are 900mm high with no kneespace beneath
- There are thumb turn taps to the sinks



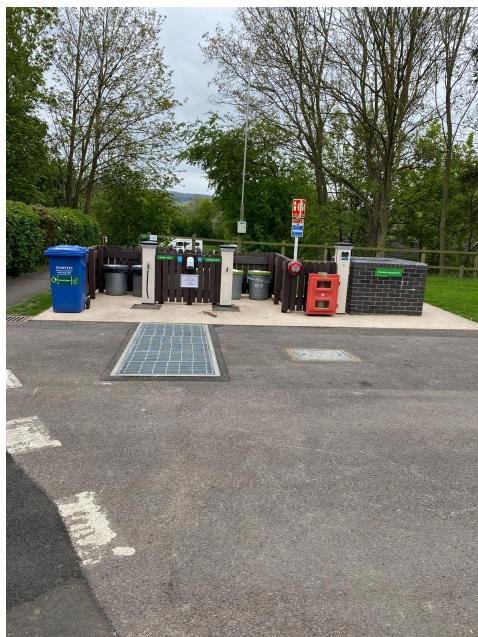
Information Room – Reception Building

- Accessed via a dropped kerb, and up a slight ramp to a covered level area
- The door is 850mm wide and opens inwards, over a weather strip at the threshold
- The room's dimensions are 3000mm x 2600mm
- Information is displayed from 500mm high to the top of the notice board



Service Points

- There are four Service Points around the site, please check the site map for details
- All of the service points have level access from the roads adjacent to them
- The paths around the Service Points can be as narrow as 800mm wide
- The water taps are at a maximum of 800mm high, with cross head taps
- Chemical Waste Points can be found at some service points too



Motorhome Service Point

- There are two Motorhome Service Points on site, one located close to the main toilet block and the other adjacent to the service point on the upper level of the site
- The taps are 1150mm high from a 90mm kerb
- There is a drive over disposal point



Recycling & Waste Area

- This site has two waste and recycling areas, please consult the Site Map for its specific location. If you have any concerns or questions please discuss with the site team during your stay.



Play Area

- There is a play area towards the south east of the site
- There is access to the play area via a path, with a section of gravel, the path is 1100mm wide

- The gate is 1050mm wide
- The equipment is mounted on safety flooring



Dog Walk

- There are two dog walks on site, one at the top of the site and one at the bottom
- The dog walk to the top of the site is accessed via 9, 150mm steps, near the “Goods Shed” toilet block
- The dog walk at the top has a 900mm wide gate, with a 1300mm high handle
- The dog walk at the top has woodchipping to the ground
- The dog walk to the bottom has a 1100mm wide gate
- The dog walk to the bottom has natural ground



Bottom Dog Walk



Top Dog Walk

Information

Written Information

- A range of leaflets for local attractions are available in the Information Room.
- Please ask at reception if you have difficulty reading third party leaflets and staff will be happy to read these to you upon request

Customer Care & Support

Booking Procedures

- If you have any specific requirements for your stay please contact the site directly and they will be happy to discuss your requirements and reserve you the most suitable pitch wherever possible.

Evacuation

- There is an assembly point opposite reception in the event of an emergency
- Please ask at reception for more details

Customer Care and Staff Training

- All on site staff have received disability awareness and etiquette training.

Public Transport

- There is a bus service (hail and ride) from the site entrance, with buses to Evesham, Moreton-in-Marsh, Stratford Upon Avon, Chipping Camden and Cheltenham

Taxi

- Please contact the site who keep a list of local taxi companies including those offering a wheelchair accessible service where available