

Accessibility Guide for Broomfield Farm Caravan & Motorhome Club Site

Contact for Accessibility Enquiries: Please ask for the Duty Manager

✉ broomfieldfarm@camc.com

☎ 01825 872242

🌐 <https://www.caravanclub.co.uk/club-sites/england/south-east-england/east-sussex/broomfield-farm-caravan-club-site/>

At a Glance

Level Access

- The site is relatively level throughout, however the ground can be uneven in places

Step only Access

- The information room has a small step over threshold

Accessible Toilets and Showers

- There is no Toilet Block on site

Accessible Pitches

- No designated accessible pitches, so please contact us in advance to discuss your requirements.



We support the Hidden Disabilities Scheme

- Our organisation supports the Hidden Disabilities Scheme, lanyards and pins are available in reception

Site Address

Broomfield Farm Caravan Club Site
Stalkers Lane,
East Hoathly,
Lewes,
East Sussex,
BN8 6QS

Arrival and Reception

Approach Route

- Access onto the site is via a country lane which leads to a tarmac driveway
- The reception building is on the right hand side of the site entrance
- There is no barrier at the entrance of the site
- The ground is level in this area with hard surfaced paths linking facilities.

Parking

- A new arrival bay is set within a few metres of the Reception building.
- There is space for 6 cars to park immediately adjacent to reception, there are no marked bays. The ground in this area is level and tarmac.
- There is a Late Night Arrival area near the visitor parking area for 1 vehicle

Entrance into Reception

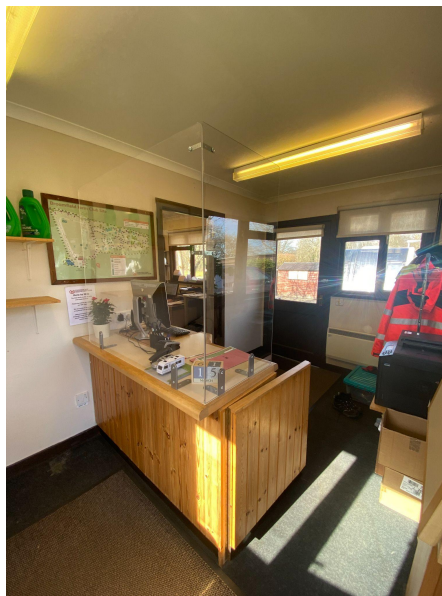
- There is a dropped kerb to a 1900mm long sloping paved area, in front of reception
- The Entrance door is 810mm wide with a 30mm threshold
- The entrance door is not power assisted, and opens inwards
- There is a call bell at 1200mm above ground level.



Entrance to Reception

Reception

- There is limited turning space, approximately 1600mm x 1600mm turning space, clear of the desk and furniture
- The reception desk is set 870mm above the floor with no kneespace
- The desk is not fitted with a hearing loop



Getting around the Site

- The site is generally set relatively level throughout, however there is a sloped area immediately outside of the entrance of the site and a sloping area at the rear of the site.

Pitches

- There are 80 pitches on site, 34 of which are hardstanding
- Roll out mats are not provided
- The 2 pitches nearest reception and the 2 pitches nearest the first service point are used as accessible pitches if needed. These pitches are allocated according to personal needs and preference, please contact the site in advance to discuss your requirements.
- Pitch 1 is hardstanding, 20 metres from reception and 22 metres from the service point
- Pitch 11 is hardstanding 140 metres from reception and 30 metres from the service point

There are no Toilet or Shower Facilities on site.

Other Facilities

Information Room – Adjacent to Reception

- Access via the paved area around reception
- The door is 810mm wide with a 30mm step in
- The room's dimensions are 1900mm x 2100mm
- Information is displayed on shelves between 800mm and 1200mm and a display unit between 500mm and 1200mm



Dog Walk

- There is a dog walk to the north side of the site
- The ground is uneven and a mixture of soil and grass



Boules Pitch

- There is a boules pitch opposite pitches 5 and 6



Service Points

- There are Service Points at intervals around the site, please check the site map for details
- All of the service points are on concrete settings
- The paths around the Service Points can be as narrow as 750mm wide
- The water taps are at a maximum of 800mm high, with cross head taps
- Chemical Waste Points are also at intervals around the site
- The Chemical Waste Point taps are 1150mm high



Motorhome Waste Point

- There is one Motorhome Waste Point on site, located close to the front of the site
- The taps are 900mm high



Information

Written Information

- A range of leaflets for local attractions are available in the Information Room.
- Please ask at reception if you have difficulty reading third party leaflets and staff will be happy to read these to you upon request

Customer Care & Support

Booking Procedures

- If you have any specific requirements for your stay please contact the site directly and they will be happy to discuss your requirements and reserve you the most suitable pitch wherever possible.

Evacuation

- There is an assembly point opposite reception in the event of an emergency
- Please ask at reception for more details

Customer Care and Staff Training

- All on site staff have received disability awareness and etiquette training.

Public Transport

- Uckfield Train Station is 6.5 miles from the site, with trains running to London
- The 54 bus goes between Eastbourne and Uckfield, and stops in East Hoathly

Taxi

- Please contact the office if you have a question regarding the booking of a Taxi for your needs.