

## **Accessibility Guide for Cae Mawr Caravan & Motorhome Club Site**

Contact for Accessibility Enquiries: Please ask for the Duty Manager

✉ caemawr@camc.com

☎ 01248 853737

🌐 <https://www.caravanclub.co.uk/club-sites/wales/anglesey/cae-mawr-caravan-club-site/>

### **At a Glance**



#### **Level Access**

- The site is gently sloping throughout



#### **Step only Access**

- There is 150mm step into the reception
- There is a 90mm step into the information room



#### **Accessible Toilets and Showers**

- There are no toilet or shower facilities



#### **Accessible Pitches**

- No designated accessible pitches, however pitches are allocated according to your needs or preference, so please contact us in advance to discuss your requirements.



#### **We support the Hidden Disabilities Scheme**

- Our organisation supports the Hidden Disabilities Scheme, lanyards and pins are available in reception

## **Site Address**

Cae Mawr Caravan Club Site  
Llangefni Road,  
Marianglas,  
Anglesey,  
LL73 8NY,  
Wales

## **Arrival and Reception**

### **Approach Route**

- The site is accessed via a tarmac driveway
- The reception building is on the right hand side when you enter the site
- There are no barriers to the site
- The ground is level in this area with hard surfaced paths linking facilities.

### **Parking**

- A new arrival bay is set within a few metres of the Reception building.
- There is space for 2 visitor cars to park approximately 5 metres from the reception, and there are marked bays however no disabled bays
- There are no late night arrival bays

### **Entrance into Reception**

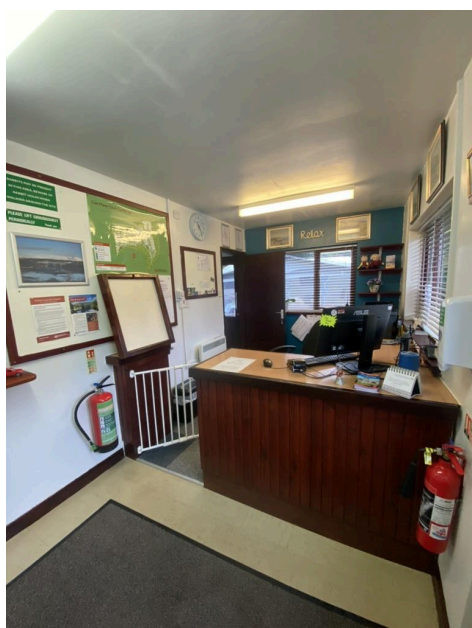
- There is a ramp to the entrance of the reception
- The Entrance door is 900mm wide over a 150mm threshold
- The entrance door is not power assisted, and opens inwards
- A call bell is available to summon assistance, this is 1500mm above ground level



Entrance to Reception

## Reception

- There is approximately 1900mm x 2200mm turning space, clear of the desk and furniture
- The reception desk is set 950mm above the floor with no dropped section
- The desk is not fitted with a hearing loop



## Getting around the Site

- The site is gently sloping throughout
- Pedestrians share vehicles routes, which are well maintained tarmac with no speed bumps

## **Pitches**

- There are 73 pitches on site, 41 of which are hardstanding
- Temporary multipurpose access rubber matting is not provided
- There are no designated accessible pitches, however pitches are allocated according to your needs or preference, so please contact us in advance to discuss your requirements.
- There is 1 hardstanding pitch adjacent to the car park and 5 metres from the reception, which may be appropriate for those with accessibility needs

## **Toilets and Changing Facilities**

There are no toilet or shower facilities on site

## **Other Facilities**

There are no dishwashing or laundry facilities on site

### **Information Room – Adjacent to Reception**

- The information room is near the reception
- The door opens to 500mm wide, over a 90mm step, with an 100mm threshold
- The room's dimensions are 1400mm x 1500mm
- Information is displayed at 700mm high





## **Service Points**

- There are Service Points at intervals around the site, please check the site map for details
- All of the service points are on concrete settings, some are accessed via grass and some are accessed from the roadway
- The paths around the Service Points can be as narrow as 800mm wide
- The water taps are at a maximum of 800mm high, with cross head taps
- Chemical Emptying Points can be found here too, with controls at 1300mm high



### **Motorhome Service Point**

- There is one Motorhome Service Point on site, located at the far end of the site
- The Motorhome Service Point is a “reverse in” style, with taps at 900mm high



### **Recycling & Waste Area**

- This site has a single waste and recycling area, please consult the Site Map for its specific location. If you have any concerns or questions please discuss with the site team during your stay.

## **Information**

### **Written Information**

- A range of leaflets for local attractions are available in the Information Room.
- Please ask at reception if you have difficulty reading third party leaflets and staff will be happy to read these to you upon request

## **Customer Care & Support**

### **Booking Procedures**

- If you have any specific requirements for your stay please contact the site directly and they will be happy to discuss your requirements and reserve you the most suitable pitch wherever possible.

### **Evacuation**

- There is an assembly point adjacent to the reception in the event of an emergency
- Please ask at reception for more details

### **Customer Care and Staff Training**

- All on site staff have received disability awareness and etiquette training.

### **Public Transport**

- There is a bus service along the main road from Amlwch to Bognor, approximately half a mile from site

### **Taxi**

- Please contact the site who keep a list of local taxi companies including those offering a wheelchair accessible service where available.