

Accessibility Guide for Clumber Park Caravan & Motorhome Club Site

Contact for Accessibility Enquiries: Please ask for the Duty Manager

✉ clumberpark@camc.com

☎ 01909 484758

🌐 <https://www.caravanclub.co.uk/club-sites/england/east-midlands/nottinghamshire/clumber-park-caravan-club-site/>

At a Glance



Level Access

- The site is relatively level throughout, with some gentle slopes around site



Step only Access

- There is step free access to all facilities in at least one area



Accessible Toilets and Showers

- There is a combined accessible toilet and shower cubicle and an accessible Toilet Cubicle in both Toilet Blocks



Accessible Pitches

- No designated accessible pitches, however pitches are allocated according to your needs or preference, so please contact us in advance to discuss your requirements.



We support the Hidden Disabilities Scheme

- Our organisation supports the Hidden Disabilities Scheme, lanyards and pins are available in reception

Site Address

Clumber Park Caravan Club Site
Lime Tree Avenue,
Clumber Park,
Worksop,
Nottinghamshire,
S80 3AE

Arrival and Reception

Approach Route

- The site is easily accessed from the roads within Clumber Park, there are signs showing the entrance to the site
- There is a tarmac driveway leading to the forecourt with visitor parking
- The reception building is on the left hand side of the access road when you enter the site
- The gate from the road is left open during the day time but is closed from 8pm
- The ground is level in this area with hard surfaced paths linking facilities.

Parking

- A new arrival bay is set within a few metres of the Reception building.
- There are 30 marked parking bays within 30 metres of the Reception building however there are no designated accessible bays
- There are no Late Night Arrival bays

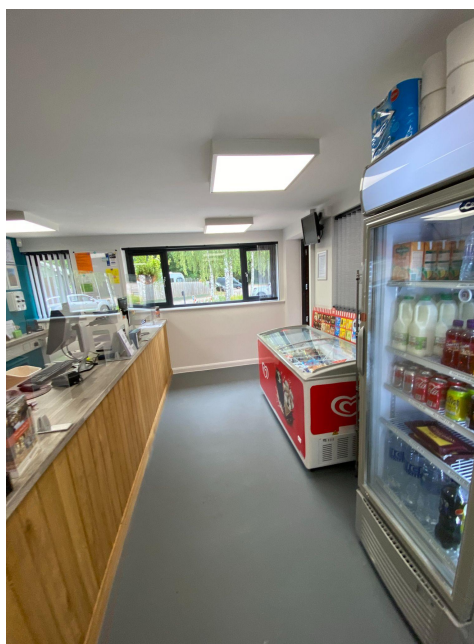
Entrance into Reception

- There is a tarmacked area which leads to a dropped kerb with a tactile finish to a paved, sloping path to reception
- The entrance door is 800mm wide with a 30mm weather strip threshold
- The entrance door is not power assisted, and opens outwards
- A call bell is available to summon assistance, this is 1400mm above ground level



Reception

- There is approximately 4200mm x 1600mm turning space, clear of the desk and furniture
- The reception desk is set 900mm above the floor and incorporates a dropped section at 750mm high
- The desk is not fitted with a hearing loop
- There are some items available for sale in the reception, these are between 50mm and 1500mm high



Getting around the Site

- The site is gently sloping throughout
- Pedestrians share vehicle routes which are well maintained tarmac, but do incorporate speed bumps
- There is one main pedestrian path through the middle of the site, leading to the children's play area
- The ground around the facilities is well paved and level with dropped kerbs

Pitches

- There are 169 pitches on site, 118 of which are hardstanding
- Roll out mats are not provided
- There are no designated accessible pitches, however pitches are allocated according to your needs or preference, so please contact us in advance to discuss your requirements.
- There are 4 hardstanding pitches, within 25 metres of each toilet block which may be suitable for those with accessibility needs

Toilets and Changing Facilities

Accessible Toilets and Bathing Facilities – Toilet Block A

- A combined Accessible Toilet and Shower cubicle is located within Toilet Block A
- The cubicle is accessed via shallow ramps to the paved area around the toilet block
- The door is 900mm wide, over a level threshold and opens outwards
- The cubicle door is secured by Blue Heart RADAR key, one can be borrowed from reception upon request
- The cubicle's overall dimensions are 2400mm x 2700mm
- The WC pan is left hand transfer.
- The shower seat is right hand transfer
- The toilet seat is 480mm, and the shower seat is 500mm above the floor level
- The clear space to the side of the toilet is 1600mm wide
- The cubicle is fitted with a pull cord alarm, which is tested frequently
- The shower seat and WC Pan are fitted with grab rails to assist transfer
- Shower controls are 1000mm high

- The shower head is fitted on a sliding rail, which is a minimum of 1250mm above floor level
- The basin taps and shower controls are fitted with levers



Accessible Toilets Facilities – Toilet Block A

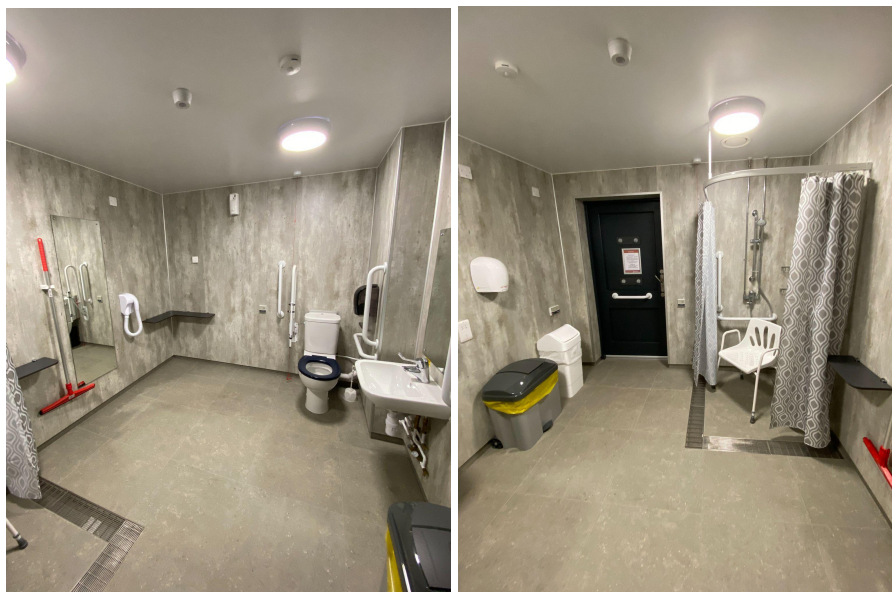
- An Accessible cubicle is located within Toilet Block A and is next to the Accessible Toilet and Shower facilities
- The cubicle is accessed via shallow ramps to the paved area around the toilet block
- The door is 850mm wide, over a level threshold and opens outwards
- The cubicle door is secured by Blue Heart RADAR key, one can be borrowed from reception upon request
- The cubicle's overall dimensions are 2700mm x 1500mm
- The WC pan is right hand transfer.
- The toilet seat is 480mm above the floor level
- The clear space to the side of the toilet is 650mm wide
- The cubicle is fitted with a pull cord alarm, which is tested frequently
- The WC Pan is fitted with grab rails to assist transfer
- The basin tap is fitted with levers



Accessible Toilet Facilities

Accessible Toilets and Bathing Facilities – Toilet Block B

- A combined Accessible Toilet and Shower cubicle is located within Toilet Block B
- The cubicle is accessed the level paved area around the Toilet Block
- The door is 850mm wide, over a level threshold and opens outwards
- The cubicle door is secured by Blue Heart RADAR key, one can be borrowed from reception upon request
- The cubicle's overall dimensions are 3200mm x 2700mm
- The WC pan is left hand transfer.
- The shower seat is right hand transfer
- The toilet seat is 480mm, and the shower seat is 500mm above the floor level
- The clear space to the side of the toilet is 1900mm wide
- The cubicle is fitted with a pull cord alarm, which is tested frequently
- The shower seat and WC Pan are fitted with grab rails to assist transfer
- Shower controls are 1000mm high
- The shower head is fitted on a sliding rail, which is a minimum of 1250mm above floor level
- The basin taps and shower controls are fitted with levers



Accessible Toilet and Bathing Facilities

Accessible Toilets Facilities – Toilet Block B

- An Accessible cubicle is located within Toilet Block B and is next to the Accessible Toilet and Shower facilities
- The cubicle is accessed via the level paved area around the Toilet Block
- The door is 900mm wide, over a level threshold and opens outwards
- The cubicle door is secured by Blue Heart RADAR key, one can be borrowed from reception upon request
- The cubicle's overall dimensions are 2300mm x 1500mm
- The WC pan is right hand transfer.
- The toilet seat is 480mm above the floor level
- The clear space to the side of the toilet is 500mm wide
- The cubicle is fitted with a pull cord alarm, which is tested frequently
- The WC Pan is fitted with grab rails to assist transfer
- The basin tap is fitted with levers



Accessible Toilet Facilities

Standard Toilets and Washrooms

- There are two Toilet Blocks on site, Toilet Block A is to the North of the site, opposite pitches 108, 109 and 110. Toilet Block B is to the South of the site, opposite pitches 23, 24 and 25.
- Toilet Block A has shallow ramps leading to the level paved area around the toilet block.
- Toilet Block B has level access from the roadways and the pedestrian path to the level paved area around the toilet block
- Entrance doors to the male and female areas in both blocks are accessed with a code lock.
- The female area in Toilet Block A has 7 WC cubicles, 7 Shower cubicles and 3 Washbasin Privacy cubicles
- The male area in Toilet Block A has 4 WC cubicles, 4 Urinals including 1 lower Urinal, 7 Shower cubicles and 3 Washbasin Privacy cubicles
- The female area in Toilet Block B has 6 WC cubicles, 4 Shower cubicles and 2 Washbasin Privacy cubicles
- The male area in Toilet Block B has 5 WC cubicles, 2 Urinals, 4 Shower cubicles and 3 Washbasin Privacy cubicles
- There are modified WC and Shower cubicles with grab rails to assist movement in each male and female areas in each toilet block, and modified Washbasin Privacy cubicles in each female area and in the male area in Toilet Block A
- Taps in each block incorporate lever controls



Toilet Block A



Toilet Block B

Inclusive Bathroom - Toilet Block A

- The Inclusive Bathroom is accessed via the paved area around the building
- The door opens to 900mm wide, over a level threshold and opens outwards
- There is a code lock to access the room, the lock is 900mm high
- The room's dimensions are 3350mm x 2450mm
- There is a half sized bathtub, with a shower above with twist turn taps to operate
- There is a shower area in the room, with the controls at 1000mm high.
- The shower head is moveable and is mounted on a sliding rail between 1200mm and 1750mm high
- There is a drop down baby change unit at 900mm high
- The toilet is 420mm high



Inclusive Bathroom - Toilet Block B

- The Inclusive bathroom is accessed via the paved area around the building
- The door opens to 900mm wide, over a level threshold and opens outwards
- There is a code lock to access the room, the lock is 900mm high
- The room's dimensions are 3000mm x 4200mm
- There is a half sized bathtub, with a shower above with twist turn taps to operate
- There is a shower area in the room, with the controls at 1000mm high.
- The shower head is moveable and is mounted on a sliding rail between 1200mm and 1750mm high
- There is a drop down baby change unit at 900mm high
- The toilet is 420mm high



Other Facilities

Dishwashing – Toilet Block A

- There is access to the dishwashing room via the paved area around the building
- The door opens to 800mm wide, over a level threshold and opens inwards
- There is 2200mm x 1600mm clear space
- There are 3 sinks at 860mm high with 560mm knee space below
- There are lever taps available



Dishwashing and Laundry Room – Toilet Block B

- There is a combined dishwashing and laundry room in Toilet Block B
- The door opens to 800mm wide, over a level threshold and opens outwards
- There is 3200mm x 1600mm clear space between the sinks and the machines
- There are 3 sinks at 860mm high with 560mm knee space below
- There is one front loading washing machine and one front loading tumble dryer
- There are lever taps available



Laundry – Toilet Block A

- There is access to the Laundry room via the paved area around the building
- The door opens to 800mm wide with a level threshold, and opens outwards
- There is 1600mm x 2150mm clear space within the room
- There is one front loading washing machine, and one front loading tumble dryer
- There are two sinks at 850mm high, with 550mm knee space below
- There are lever taps available



Play Area

- There is a play area to the centre of the site
- There is a 1000mm wide path leading to the play area
- There is a 1300mm wide opening to the play area, with no gate
- The equipment is mounted on safety flooring
- Please note a lot of the equipment is designed for climbing and may not be suitable for children with physical disabilities



Ball Games Area

- There is a separate enclosed area for ball games adjacent to the play area
- There is a heavy metal gate to access, which opens to 1150mm wide
- There is tarmaced flooring here



Information Room – Adjacent to Reception

- The information room is in a timber shed opposite the reception
- There is access to the information room via a paved path
- The double doors open to 750mm either side, and has a level threshold
- The room's dimensions are 1700mm x 3400mm
- Information is displayed on a shelf at 800mm high
- There is a telephone at 1200mm high



Service Points

- There are Service Points at regular intervals around the site, please check the site map for details
- The service points are mounted on concrete, and generally have level access from the adjacent roadways
- The paths around the Service Points can be as narrow as 800mm wide
- The water taps are at a maximum of 750mm high, with cross head taps
- Chemical Waste Points can be found here too, which have taps at 1150mm high



Motorhome Service Point

- There are two Motorhome Service Points on site, adjacent to each toilet block
- Both of the Motorhome Service Points have taps at 1240mm above the ground



Motorhome Service Point at Toilet Block A



Motorhome Service Point at Toilet Block B

Information

Written Information

- A range of leaflets for local attractions are available in the Information Room.
- Please ask at reception if you have difficulty reading third party leaflets and staff will be happy to read these to you upon request

Customer Care & Support

Booking Procedures

- If you have any specific requirements for your stay please contact the site directly and they will be happy to discuss your requirements and reserve you the most suitable pitch wherever possible.

Evacuation

- There is an assembly point opposite the Late Night Arrival area in the event of an emergency
- Please ask at reception for more details

Customer Care and Staff Training

- All on site staff have received disability awareness and etiquette training.

Public Transport

- Workstop train station is 4 miles from site
- There is a bus stop 2-3 miles from site

Taxi

- Please contact the site who keep a list of local taxi companies including those offering a wheelchair accessible service where available.