

Accessibility Guide for Coed Y-Llwyn Caravan & Motorhome Club Site

Contact for Accessibility Enquiries: Please ask for the Duty Manager

✉ coedyllwyn@camc.com

☎ 01766 590254

🌐 <https://www.caravanclub.co.uk/club-sites/wales/gwynedd/coed-y-llwyn-caravan-club-site/>

At a Glance



Level Access

- The site slopes throughout, with some areas having much steeper access roads



Step only Access

- The information room has step only access



Accessible Toilets and Showers

- There is a combined accessible toilet and shower cubicle in the toilet block



Accessible Pitches

- No designated accessible pitches, however pitches are allocated according to your needs or preference, so please contact us in advance to discuss your requirements.



We support the Hidden Disabilities Scheme

- Our organisation supports the Hidden Disabilities Scheme, lanyards and pins are available in reception

Site Address

Coed-Y-Llwyn Caravan Club Site
Gellilydan,
Blaenau Ffestiniog,
Gwynedd,
LL41 4EN,
Wales

Arrival and Reception

Approach Route

- The site is accessed via a tarmac driveway
- The reception building is on the right hand side when you enter the site
- There is a proximity fob entry barrier to the site
- The ground is level in this area with hard surfaced paths linking facilities.

Parking

- A new arrival bay is set within a few metres of the Reception building.
- There is no visitor parking on site
- There are no late night arrival bays

Entrance into Reception

- There is a ramp to the entrance doors
- The Entrance door is 800mm wide over a level threshold
- The entrance door is not power assisted, and opens outwards
- A call bell is available to summon assistance, this is 1200mm above ground level



Reception

- There is approximately 2600mm x 3600mm turning space, clear of the desk and furniture
- The reception desk is set 900mm above the floor with no dropped section
- The desk is not fitted with a hearing loop



Getting around the Site

- The site slopes throughout, with some areas having much steeper access roads
- Pedestrians share vehicles routes, which are well maintained tarmac with no speed bumps

Pitches

- There are 87 pitches on site, 77 of which are hardstanding
- Temporary multipurpose access rubber matting is not provided

- There are no designated accessible pitches, however pitches are allocated according to your needs or preference, so please contact us in advance to discuss your requirements.

Toilets and Changing Facilities

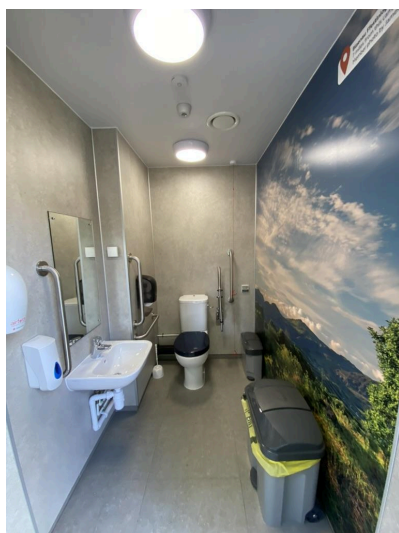
Accessible Toilets and Bathing Facilities – Toilet Block

- A combined Accessible Toilet and Shower cubicle is located in the Toilet Block, which is to the centre of the site
- The Accessible Toilet and Shower cubicle is accessed via a dropped kerb to a paved area around the toilet block
- The door is 850mm wide, over a level threshold and opens outwards
- The cubicle door is secured by a RADAR key. A key can be borrowed from Reception
- The cubicle's overall dimensions are 2700mm x 3200mm
- The WC pan is left hand transfer.
- The shower seat is right hand transfer
- The toilet seat is 480mm, and the shower seat is 500mm above the floor level
- The clear space to the side of the toilet is 1200mm wide
- The cubicle is fitted with two pull cord alarm, which are tested frequently
- The shower seat and WC Pan are fitted with grab rails to assist transfer
- Shower controls are 1000mm high
- The shower head is fitted on a sliding rail, which is a minimum of 1300mm above floor level
- The basin taps and shower controls are fitted with levers



Accessible Toilet Room

- A separate Accessible Toilet Room is located in the Toilet Block
- The Accessible Toilet is accessed via a dropped kerb to a paved area around the toilet block
- The door is 850mm wide, over a level threshold and opens outwards
- The room's dimensions are 1500mm x 2200mm
- The WC pan is right hand transfer
- The toilet seat 480mm above the floor level
- The clear space to the side of the toilet is 600mm wide
- The cubicle is fitted with a pull cord alarm, which is tested frequently
- The WC pan is fitted with grab rails to assist transfer



Standard Toilets and Washrooms

- There is one toilet and shower block which is to the centre of the site
- The toilet block has a smooth bricked path around, with a dropped kerb to access
- The female area has 6 WC cubicles, 4 Shower cubicles and 2 Washbasin Privacy cubicles
- The male area has 5 WC cubicles, 2 Urinals, 4 Shower cubicles and 2 Washbasin Privacy cubicles
- Both the female and male areas have a modified WC cubicle, a modified Shower cubicle and a modified Washbasin Privacy cubicle with grab rails to assist mobility
- Taps in block incorporate lever controls



Inclusive Room

- There is an inclusive room in the toilet block
- The door opens to 800mm wide, with a rollover threshold and opens inwards
- The door is locked by a key, which can be borrowed from reception
- The room's dimensions are 2400mm x 4100mm
- The WC pan is 420mm above the floor level
- There is a half bath with a shower above, this has lever taps to operate
- There is a drop down baby change unit at 900mm
- There is a shower to one corner of the room, with controls at 1000mm above the floor level
- The shower head is on a sliding rail, a minimum of 1400mm above the floor level
- The basin has lever taps



Other Facilities

Dishwashing and Laundry Room – Toilet Block

- There is a combined dishwashing and laundry room within the toilet block
- The door is 800mm wide, over a level threshold and opens inwards
- There is 1600mm x 3200mm clear space
- There are 3 sinks in a 850mm high counter with 550mm knee space underneath
- There is one front loading washing machine and one front loading tumble dryer
- There are lever turn taps available



Dishwashing and Laundry Room

Information Room – Adjacent to Reception

- The information room is accessed via a 600mm wide pathway
- The door opens to 900mm wide, with a 40mm step up
- The room's dimensions are 1800mm x 2900mm
- Information is displayed at 880mm high



Play Area

- There is a play area to the south of the site
- There is access via a steep grassed area
- The gate is a large double gate
- The equipment is mounted on safety flooring



Dog Walk

- There is a dog walk to the south of the site
- There is access via a gravel path
- The walk is set on a hill and has uneven ground



Service Points

- There are Service Points at intervals around the site, please check the site map for details
- All of the service points are on concrete settings, with level to access them from the adjacent roadways or paths

- The water taps are at a maximum of 750mm high, with cross head taps
- Chemical Emptying Points can be found here too with taps at 1150mm high



Motorhome Service Point

- There is one Motorhome Service Point on site, located to the east of the site
- The taps are mounted on a 100mm kerb and are 1150mm above the kerb



Recycling & Waste Area

- This site has a single waste and recycling area, please consult the Site Map for its specific location. If you have any concerns or questions please discuss with the site team during your stay.

Information

Written Information

- A range of leaflets for local attractions are available in the Information Room.
- Please ask at reception if you have difficulty reading third party leaflets and staff will be happy to read these to you upon request

Customer Care & Support

Booking Procedures

- If you have any specific requirements for your stay please contact the site directly and they will be happy to discuss your requirements and reserve you the most suitable pitch wherever possible.

Evacuation

- There is an assembly point opposite the reception in the event of an emergency
- Please ask at reception for more details

Customer Care and Staff Training

- All on site staff have received disability awareness and etiquette training.

Public Transport

- There is a limited bus service a 10 minute walk away, which goes to Porthmadog and Blaenau Ffestiniog

Taxi

- Please contact the site who keep a list of local taxi companies including those offering a wheelchair accessible service where available.