



# *Let us entertain you*

Throughout the season we offer a range of acts to keep the whole family entertained. During peak periods you'll find plenty for kids and adults alike, while outside of school holidays you'll find more for adults, such as bingo, quiz nights and some great musical acts. The entertainment schedule is subject to change.

# Meet our Entertainers

## Ami Lauren

Ami presents a fast moving show with a delightful mix of varied material including song, dance and magic to suit all ages and tastes.

## Beck Bennett

A fantastic female vocalist, new at Hillhead this year.

## Christian Harling

Christian is a powerful vocalist who performs excellent soul music hits.

## Dave Banana

A singer and guitarist whose voice has been variously compared with Bruce Springsteen, Joe Cocker, Rod Stewart and Neil Diamond.

## Dave Whitfield

Dave will keep you entertained as he sings the hits from the 50s to the present day.

## Eloise Cole

With a beautiful voice and excellent songs, Eloise is always a crowd-pleaser at Hillhead.

## Jamie Hill

An excellent vocalist and guitarist covering a variety of genres. Jamie loves to put a unique spin on both modern hits and classics from the last few decades.

## Jason Howard

Jason is an international vocalist and entertainer covering a great range of genres, from soul to rock, funk to country, britpop to ballads and reggae, rap and swing.

## Jonathan Mark

A top vocalist and entertainer, Jonathan performs a wide range of music from smooth, powerful ballads to foot-tapping beats.

## Karma

Excellent female vocals.

## Katie Jaye

Not only does Katie offer relaxing, easy listening vocals, she's also a talented saxophonist.

## Lesley Presley

A Hillhead favourite - Lesley will have you in awe with his Elvis Presley tribute Show.

## Lisa Walker

A female vocalist with a tremendous personality and wide repertoire.

## Lisa Winwood

With a huge repertoire from the 50's through to modern day, Lisa will blow you away with her powerful voice, offering something for everyone's musical taste.

## Michael Douglas

Michael is widely considered to be Europe's No1 Neil Diamond Tribute.

## Party Girls SOS

A vibrant female duo who sing party songs to fill the dance floor!

## Paul Sylvester

If you enjoy Soul and Motown, Paul will be right up your street as he covers all the well-known hits.

## Ricky Tempo

With a career which spans over 40 years of guitar, vocals and entertaining, Ricky has performed all over the UK and Europe playing contemporary and classic pop music.

## Sam Chapman

Female vocalist with a strong voice and massive repertoire.

## Sonny King

Sonny pays tribute to some of the great Soul and Motown artists.

## Stephanie Blackler

Former 'Torbay's Got Talent' winner, Stephanie sings a mix of classical and Modern songs.

## Stevie Gee

Stevie will have you dancing as he covers all the best known 80's hits and plays saxophone.

## Terri Dene

A very experienced female vocalist who performs a huge range of songs for everyone to enjoy.

## Toby Graham

An excellent vocalist and guitarist covering a variety of genres.

## Tomas Brain

Tomas is a young male vocalist with an excellent voice and personality to match, specialising in pop and rock hits.

## Keeping the kids entertained

### Cosmo

Kids and grown-ups alike will be amazed by the magic show and balloon animals created by Cosmo.

### Kids Club

Our entertainment team have got plenty to keep you busy! From the talented Cosmo and Anna Banana to an excellent selection of games, competitions, dancing and more, the kids will be sure to have a wonderful time.



# Entertainment programme

## May

### Friday 28

8:30pm Lesley Presley

### Saturday 29

5pm Bingo

7pm Kids in the Arcade

8:30pm David Whitfield

### Sunday 30

5pm Bingo

7pm Kids in the Arcade

8:30pm Michael Douglas

### Monday 31

7pm Kids Club

8:30pm Katie Jaye



Katie Jaye

## June

### Tuesday 1

5pm Bingo

7pm Mega Quiz

### Wednesday 2

5pm Bingo

7pm Kids Club

8:30pm Terri Dene

### Thursday 3

7pm Kids Club

8:30pm Party Girls SOS

### Friday 4

5pm Bingo

7pm Music Quiz

8:30pm Stephanie Blackler

### Saturday 5

8:30pm Stevie Gee

### Sunday 6

8:30pm Sonny King

### Wednesday 9

8:30pm Party Girls SOS

### Friday 11

8:30pm Dave Hughes

### Saturday 12

8:30pm Tomas Brain

### Sunday 13

8:30pm Steve Brooks

### Wednesday 16

8:30pm Katie Jaye

### Friday 18

8:30pm Lesley Presley

### Saturday 19

8:30pm David Whitfield

### Sunday 20

8:30pm Paul Sylvester

### Wednesday 23

8:30pm Party Girls SOS

### Friday 25

8:30pm Stephanie Blackler

### Saturday 26

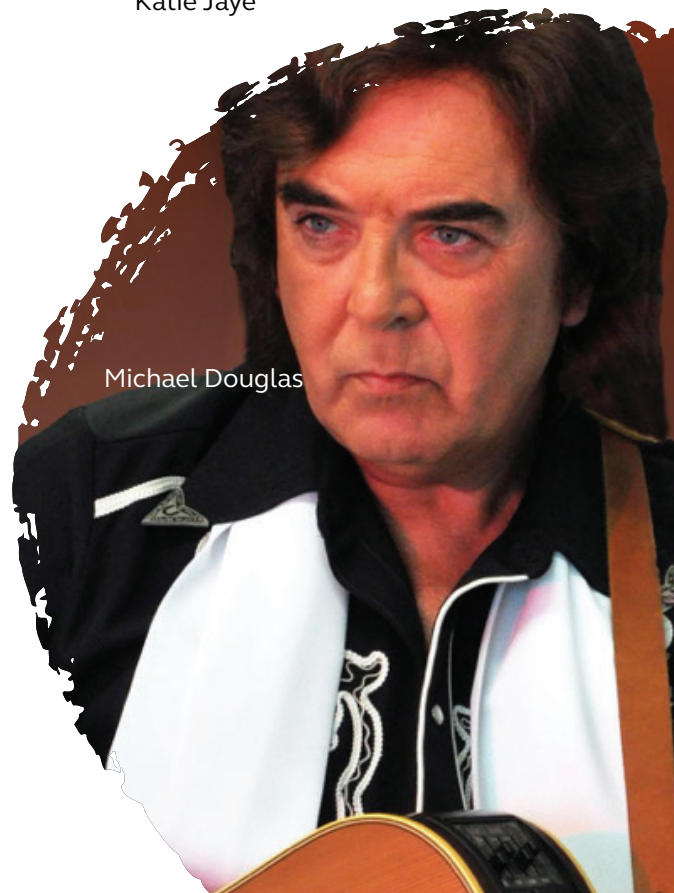
8:30pm Jamie Hill

### Sunday 27

8:30pm Terri Dene

### Wednesday 30

Katie Jaye



Michael Douglas

# July

## Friday 2

8:30pm Toby Graham

## Saturday 3

8:30pm Stevie Gee

## Sunday 4

8:30pm Michael Douglas

## Wednesday 7

8:30pm Party Girls SOS

## Friday 9

8:30pm Sonny King

## Saturday 10

8:30pm Lisa Walker

## Sunday 11

8:30pm David Whitfield

## Wednesday 14

8:30pm Katie Jaye

## Friday 16

8:30pm Lesley Presley

## Saturday 17

8:30pm Tomas Brain

## Sunday 18

8:30pm Terri Dene

## Wednesday 21

8:30pm Party Girls SOS

## Friday 23

8:30pm Ami Lauren

## Saturday 24

5pm Bingo

6pm Kids in the Arcade

8:30pm Lisa Walker

## Sunday 25

5pm Bingo

6pm Kids Club

8:30pm Paul Sylvester

## Monday 26

5pm Bingo

8:30pm Christian Harling

## Tuesday 27

5pm Bingo

6pm Kids Club

8pm Mega Quiz

## Wednesday 28

5pm Bingo

8:30pm Eloise Cole

## Thursday 29

6pm Kids Club

8:30pm Party Girls SOS

## Friday 30

5pm Bingo

7pm Music Quiz

8:30pm Toby Graham

## Saturday 31

5pm Bingo

6pm Kids Club

8:30pm Stevie Gee





# August

## Sunday 1

5pm Bingo  
6pm Kids Club  
8:30pm Michael Douglas

## Monday 2

5pm Bingo  
8:30pm Katie Jaye

## Tuesday 3

5pm Bingo  
6pm Kids Club  
8pm Mega Quiz

## Wednesday 4

5pm Bingo  
8:30pm Sonny King

## Thursday 5

6pm Kids Club  
8:30pm Party Girls SOS

## Friday 6

5pm Bingo  
7pm Music Quiz  
8:30pm Lisa Winwood

## Saturday 7

5pm Bingo  
6pm Kids Club  
8:30pm Dave Hughes

## Sunday 8

5pm Bingo  
6pm Kids Club  
8:30pm Dave Banana

## Monday 9

5pm Bingo  
8:30pm Katie Jaye

## Tuesday 10

5pm Bingo  
6pm Kids Club  
8pm Mega Quiz

## Wednesday 11

5pm Bingo  
8:30pm Stephanie Blackler

## Thursday 12

6pm Kids Club  
8:30pm Party Girls SOS

## Friday 13

5pm Bingo  
7pm Music Quiz  
8:30pm Lesley Presley

## Saturday 14

5pm Bingo  
6pm Kids Club  
8:30pm Ami Lauren

## Sunday 15

5pm Bingo  
6pm Kids Club  
8:30pm Paul Sylvester

## Monday 16

5pm Bingo  
8:30pm Katie Jaye

## Tuesday 17

5pm Bingo  
6pm Kids Club  
8pm Mega Quiz

## Wednesday 18

5pm Bingo  
8:30pm Christian Harling

## Thursday 19

6pm Kids Club  
8:30pm Party Girls SOS

## Friday 20

5pm Bingo  
6pm Kids Club  
8:30pm Beck Bennett

## Saturday 21

5pm Bingo  
6pm Kids Club  
8:30pm Lisa Walker

## Sunday 22

5pm Bingo  
6pm Kids Club  
8:30pm Lisa Walker

## Monday 23

5pm Bingo  
8:30pm Jamie Hill

## Tuesday 24

5pm Bingo  
6pm Kids Club  
8pm Mega Quiz

## Wednesday 25

5pm Bingo  
8:30pm Sonny King

## Thursday 26

6pm Kids Club  
8:30pm Party Girls SOS

## Friday 27

5pm Bingo  
6pm Kids Club  
8:30pm Karma

## Saturday 28

5pm Bingo  
6pm Kids Club  
8:30pm Jonathan Mark

## Sunday 29

5pm Bingo  
6pm Kids Club  
8:30pm Michael Douglas

## Monday 30

5pm Bingo  
8:30pm Katie Jaye

## Tuesday 31

5pm Bingo  
6pm Kids Club  
8pm Mega Quiz

Tomas Brain



## September

### Wednesday 1

5pm Bingo  
8:30pm Christian Harling

### Thursday 2

6pm Kids Club  
8:30pm Party Girls SOS

### Friday 3

5pm Bingo  
6pm Kids Club  
8:30pm Toby Graham

### Saturday 4

8:30pm Stevie Gee

### Sunday 5

8:30pm Paul Sylvester

### Wednesday 8

8:30pm Katie Jaye

### Friday 10

8:30pm Lesley Presley

### Saturday 11

8:30pm Dave Hughes

### Sunday 12

8:30pm Steve Brooks

### Wednesday 15

8:30pm Party Girls SOS

### Friday 17

8:30pm Jamie Hill

### Saturday 18

8:30pm Lisa Walker

### Sunday 19

8:30pm Michael Douglas

### Wednesday 22

8:30pm Ricky Tempo

### Friday 24

8:30pm Eloise Cole

### Saturday 25

8:30pm David Whitfield

### Sunday 26

8:30pm Terri Dene

### Wednesday 29

8:30pm Stephanie Blackler

## October

### Friday 1

8:30pm Toby Graham

### Saturday 2

8:30pm Dave Hughes

### Wednesday 6

8:30pm Katie Jaye

### Friday 8

8:30pm Ami Lauren

### Saturday 9

8:30pm Sam Chapman

### Sunday 10

8:30pm Jamie Hill

### Wednesday 13

8:30pm Katie Jaye

### Friday 15

8:30pm Stephanie Blackler

### Saturday 16

8:30pm Michael Douglas

### Sunday 17

8:30pm Terri Dene

### Wednesday 20

8:30pm Katie Jaye

### Friday 22

8:30pm Eloise Cole

### Saturday 23

5pm Bingo  
6pm Kids Club  
8:30pm Steve Brooks

### Sunday 24

5pm Bingo  
6pm Kids Club  
8:30pm Paul Sylvester

### Monday 25

5pm Bingo  
8:30pm Jason Howard

### Tuesday 26

5pm Bingo  
6pm Kids Club  
8pm Mega Quiz

### Wednesday 27

5pm Bingo  
8:30pm Toby Graham

### Thursday 28

6pm Kids Club  
8:30pm Party Girls SOS

### Friday 29

5pm Bingo  
7pm Music Quiz  
8:30pm Sonny King

### Saturday 30

8:30pm Dave Banana

### Sunday 31

8:30pm Terri Dene

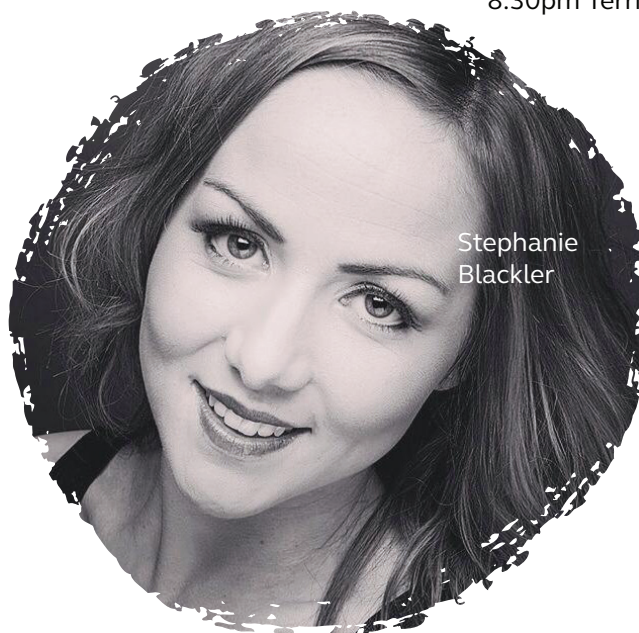
## November

### Wednesday 3

8:30pm Katie Jaye

### Friday 5

8:30pm Stephanie Blackler



Stephanie  
Blackler