



Scarborough West Ayton Club Campsite

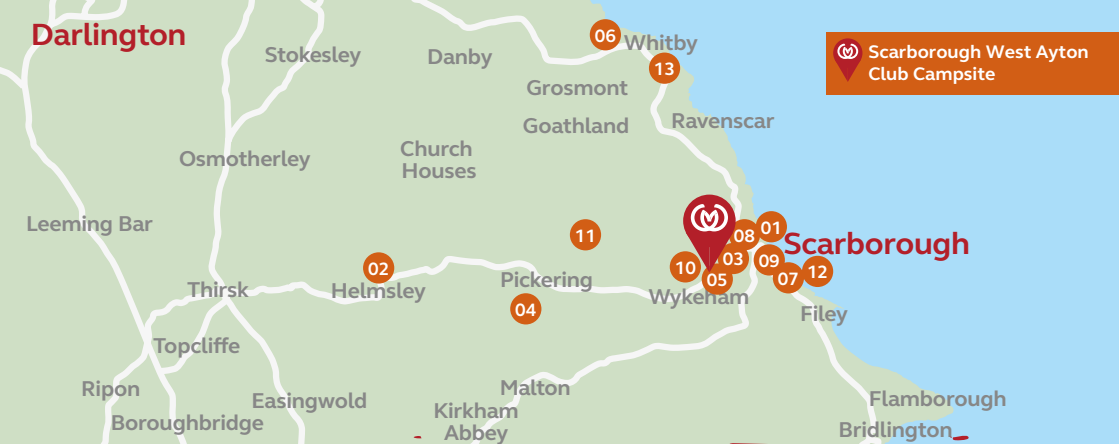
Discover North Yorkshire



Places to see and things
to do in the local area



**CARAVAN AND
MOTORHOME CLUB®**
SINCE 1907



Make the most of your time

Visit

- 1 **Scarborough Castle**
Over 3000 years of turbulent history, dating back to the Bronze Age.
- 2 **North York Moors National Park**
Miles of stunning heather, towering sea cliffs, secluded beaches and grassy dales. Discover wildlife, history, ancient woodlands and picturesque villages.
- 3 **North Yorkshire Moors Railway**
Experience Pullman dining or afternoon tea, Moorlander lunches, Murder Mystery and more!
- 4 **Flamingo Land**
A Theme Park and Zoo with experiences from animal encounters to zookeeper days.

Don't forget to check your Great Saving Guide for all the latest offers on attractions throughout the UK.

camc.com/greatsavingsguide

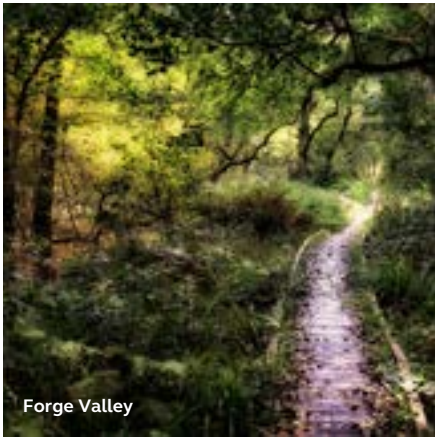


Great Savings
Guide

- 5 **North Yorkshire Water Park**
Watersports, fishing, swimming, pedalos and inflatable aqua park.
- 6 **Valley Adventures**
Outdoor aerial adventure and survival experiences for both adults and families.
- 7 **Scarborough Surf School**
Surf lessons, coasteering and paddle boarding. Learn at your own pace and be at one with the waves.



North Yorkshire Moors



Walk

8 Local Walks

A good walking route near the site is the Forge Valley walk via the remains of East Ayton Castle.

With the North York Moors National Park on the doorstep, there is extensive countryside to explore and beaches at Scarborough, Whitby and Filey.

Cycle

9 Local Routes

The disused coastal railway is popular as a cycle way.

10 National Cycle Network

The nearest route is route number 1, Moors to Sea.

11 Dalby Forest

8000 acres of woodland to explore by bike or on foot, with 55 miles of cycle trails. The Dalby Observatories is one of the best places to enjoy the night sky in the country.



Explore

12 Scarborough

Home to rich history, stunning scenery and glorious beaches, this lovely town is one of the UK's most popular holiday destinations.

13 Whitby

A picturesque and traditional seaside town with a bustling quayside, beautiful sandy beach and a blend of grand Victorian architecture and a huddle of old fisherman cottages.





Visitor's top tips

Both village pubs are dog-friendly and serve great food. Scarborough Open-Air Theatre hosts international acts throughout the summer. Take a telescope and watch the stars from the field, or walk to the top of the ridge and look down over East & West Ayton. Great coastal walk around Flamborough Head – free parking if starting from Thornwick Bay. The RSPB Sanctuary at Bempton Cliffs is a lovely visit, with great viewing facilities to observe a colony of around half a million birds nesting.

There's an excellent fish & chip shop within walking distance from site. Robin Hood's Bay, Filey and Pickering are all within short driving distance.

There are several National Trust and English Heritage sites to visit in the area.

Betton Farm is only a few minutes away from site, with a lovely kids' play area, animals and a fantastic little restaurant.

A mobile fish & chip van visits site on various days of the week which is a lovely touch.

Head to the top of Oliver's Mountain for panoramic views of the town.

Close by

Supermarkets

Spar at Shell in East Ayton, 0.7 miles, Sainsbury's 4.6 miles, Morrisons 5 miles, Tesco 5.3 miles.

Swimming pool

In Scarborough, 4 miles.

Cinema & Theatre

In Scarborough, 5 miles.

Petrol Station

Shell, 0.7 miles.

Nearest Cashpoint

Sainsbury's, 4.6 miles.

Tourist Information

Railway Station and Stephen Joseph Theatre.

Public transport

There is a bus service ½ a mile away, which goes to Scarborough, Thornton le Dale, Pickering and Helmsley.