

Accessibility Guide for Winchester Caravan & Motorhome Club Site

Contact for Accessibility Enquiries: Please ask for the Duty Manager

✉ winchester@camc.com

☎ 01962 869877

🌐 <https://www.caravanclub.co.uk/club-sites/england/southern-england/hampshire/winchester-morn-hill-club-campsite/>

At a Glance

Level Access

- The site slopes throughout, and the road between the upper and the lower site is fairly steep

Step only Access

- The information room has a small step in

Accessible Toilets and Showers

- There is a combined accessible toilet and shower cubicle in the toilet block

Accessible Pitches

- No designated accessible pitches, however pitches are allocated according to your needs or preference, so please contact us in advance to discuss your requirements.



We support the Hidden Disabilities Scheme

- Our organisation supports the Hidden Disabilities Scheme, lanyards and pins are available in reception

Site Address

Winchester Caravan and Motorhome Club Site
Alresford Road,
Winchester,
Hampshire,
SO21 1HL

Arrival and Reception

Approach Route

- Access onto the site is via a tarmac driveway, the reception is near the entrance to the pitches
- The reception building is on the left hand side of the lower site, when you enter the site
- Access into the site is controlled via a vehicle barrier controlled by fob access with controls between 1000mm and 1200mm high
- The ground is level in this area with hard surfaced paths linking facilities.

Parking

- A new arrival bay is set within a few metres of the Reception building.
- There is space for visitor parking, on a tarmaced area on the upper site, approximately 35 metres from reception, however the road down to reception building is steep. There is one disabled bay available.
- There are no late night arrival bays

Entrance into Reception

- There is level access via a dropped kerb from the front of the building but there is a set of 5 steps leading to the reception from the rear. There is a handrail available here.
- The Entrance door is 950mm wide with a level threshold
- The entrance door is not power assisted, and opens inwards



Reception

- There is approximately 2400mm x 1900mm turning space, clear of the desk and furniture
- The reception desk is set 1050mm above the floor and incorporates a dropped, lift up counter top at 750mm high
- The desk is fitted with a hearing loop



Getting around the Site

- The site has sloped areas throughout, the lower field is sloping in parts (gradients of 1:9) and the access from the lower to the upper field is fairly steep (gradient of 1:12)

- Pedestrians share vehicle routes which are well maintained tarmac, but do incorporate speed bumps, however these do have gaps to allow wheelchair users to pass through the middle of the speed bump.
- There is a small area of pavement around the lower field barrier, but this does have a 50mm step up

Pitches

- There are 114 pitches on site, 51 of which are hardstanding pitches
- Roll out mats are not provided
- There are no designated accessible pitches, however pitches are allocated according to your needs or preference, so please contact us in advance to discuss your requirements.
- There are 7 pitches on the lower field that are recommended for people with accessibility needs, these are between 10 metres and 28 metres from the accessible toilet and 185 metres and 225 metres from reception

Camping Pitches

- There are 6 camping pitches on site
- These are on the upper field, to the North East of the site
- All of the pitches have electric hookups available

Toilets and Changing Facilities

Accessible Toilets and Bathing Facilities – Lower Toilet Block

- A combined Accessible Toilet and Shower cubicle is located in the Lower Toilet Block which is set to the west of the site.
- The toilet block is accessed via dropped kerbs to a hard pathway surrounding the toilet block
- The door is 950mm wide, over a flush threshold
- The cubicle door is secured by RADAR key. A key can be borrowed from Reception
- The cubicle's overall dimensions are 2650mm x 2700mm
- The WC pan is left hand transfer.

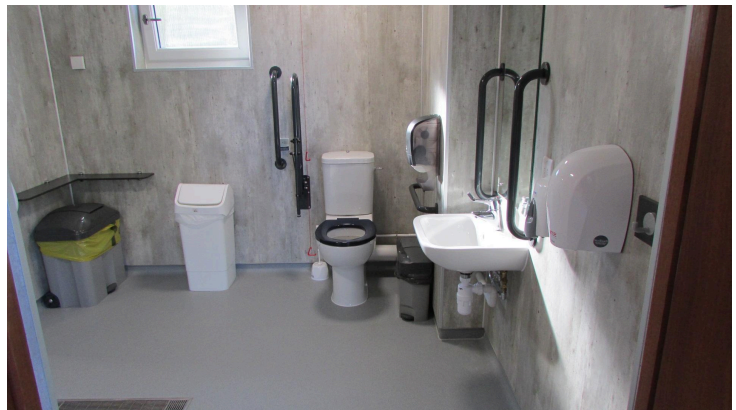
- The shower seat is left hand transfer
- The toilet seat is 480mm, and the shower seat is 480mm above the floor level
- The clear space to the side of the toilet is 1750mm wide
- The cubicle is fitted with a pull cord alarm, which is tested frequently
- The shower seat and WC Pan are fitted with grab rails to assist transfer
- Shower controls are 1000mm high
- The shower head is fitted on a sliding rail, which is a minimum of 1300mm above floor level
- The basin taps and shower controls are fitted with levers



Accessible Toilets and Bathing Facilities – Upper Toilet Block

- A combined Accessible Toilet and Shower cubicle is located in the Upper Toilet Block which is set to the east of the site.
- The toilet block is accessed via dropped kerbs to a hard pathway surrounding the toilet block
- The door is 950mm wide, over a flush threshold
- The cubicle door is secured by RADAR key. A key can be borrowed from Reception
- The cubicle's overall dimensions are 2700mm x 2700mm
- The WC pan is left hand transfer.

- The shower seat is left hand transfer
- The toilet seat is 480mm, and the shower seat is 480mm above the floor level
- The clear space to the side of the toilet is 1750mm wide
- The cubicle is fitted with a pull cord alarm, which is tested frequently
- The shower seat and WC Pan are fitted with grab rails to assist transfer
- Shower controls are 1000mm high
- The shower head is fitted on a sliding rail, which is a minimum of 1300mm above floor level
- The basin taps and shower controls are fitted with levers



Standard Toilets and Washrooms

- There are two toilet and shower blocks, one on the lower field and one on the upper field
- Entrance doors to the lower toilet block are accessed by dropped kerbs leading to a paved area
- Entrance doors to the upper toilet block are accessed by dropped kerbs leading to a paved area
- The entrance doors to the male and female toilets in the lower toilet block are 800mm wide over level thresholds

- The entrance doors to the male and female toilets in the upper toilet block are 800mm wide over level thresholds
- The female area in the Upper Toilet Block has 4 WC cubicles, 3 Shower cubicles and 3 Privacy Washbasin cubicles.
- The male area in the Upper Toilet Block has 3 WC cubicles, 3 Urinals including 1 lower urinal, 3 Shower cubicles and 2 Privacy Washbasin cubicles
- The female area in the Lower Toilet Block has 5 WC cubicles, 5 Shower cubicles and 3 Privacy Washbasin cubicles.
- The male area in the Lower Toilet Block has 3 WC cubicles, 3 Urinals including 1 lower Urinal, 5 Shower cubicles and 3 Privacy Washbasin cubicles
- There is a modified WC cubicle, a modified Privacy cubicle and a modified shower cubicle in each area of the toilet block, with grab rails for mobility assistance
- Taps in each block incorporate lever controls



Lower Toilet Block



Upper Toilet Block

Inclusive Bathroom - Lower Toilet Block

- There is an inclusive bathroom within the lower toilet block
- There is access via the paved area around the toilet block

- The door opens to 950mm wide, over a level threshold and opens outwards
- The room is L shaped, the largest part is 3100mm x 2200mm and the other part is 2700mm x 1700mm, meaning there is large amounts of clear space to manoeuvre around
- There is a 950mm high, drop down baby change unit
- There is a half sized bathtub, with a shower above with lever type controls
- There is a shower with controls at 1000mm high and the head is on a sliding rail a minimum of 1300mm high
- There is a WC which is 410mm high and allows for left hand transfer
- There are lever taps available



Other Facilities

Dishwashing – Lower Toilet Block

- Level approach via the paved area around the toilet block
- The door is 850mm wide with a level threshold and opens inwards
- There is 1600mm x 2200mm clear space
- There are 3 sinks at 860mm high, with 560mm knee space beneath
- There are lever taps available



Dishwashing and Laundry Room– Upper Toilet Block

- Level approach via paved area around the toilet block
- The room is shared dishwashing and laundry room
- The door is 850mm wide with a level threshold and opens inwards
- There is 1250mm x 3350mm clear space
- There is one front loading washing machine and one front loading tumble dryer
- There are 2 sinks at 850mm high, with 550mm knee space beneath
- There are lever taps available



Laundry – Lower Toilet Block

- Level access via the paved area around the toilet block
- The door is 850mm wide with a level threshold and opens inwards
- There is 1750mm x 3600mm clear space in the room however it narrows to 700mm wide in front of the machines
- There is 1 front loading washing machines with controls at 1050mm
- There is 1 front loading tumble dryer with controls at 1050mm
- There are 2 sinks at 850mm high with 550mm knee space beneath
- There are lever taps available



Information Room – Adjacent to Reception

- The information room is in a small wooden shed adjacent to the reception building
- The door opens to 850mm wide with a 50mm threshold and opens outwards
- There is 1100mm x 1000mm clear space in the information room
- Information is displayed on shelves between 600mm - 1200mm



Service Points

- There are Service Points at intervals around the site, please check the site map for details
- All of the service points are on concrete settings
- The paths around the Service Points can be as narrow as 1000mm wide
- The water taps are at a maximum of 800mm high, with cross head taps
- Chemical Waste Points can be found here too
- At least one Chemical Waste Point on both sections of the site have access from the front with a lower lip to allow for easier access



Service Point

Motorhome Service Point

- There are two Motorhome Service Points on site, one located close to each toilet block
- The Motorhome Service Point by the lower toilet block, has taps set on a 100mm kerb and the taps are 1150mm from the kerb
- The Motorhome Service Point by the upper toilet block, has taps set on a 120mm kerb and the taps are 1200mm from the kerb



Motorhome Service Point by Lower Toilet Block



Motorhome Service Point by Upper Toilet Block

Recycling & Waste Area

- This site has a single waste and recycling area, please consult the Site Map for its specific location. If you have any concerns or questions please discuss with the site team during your stay.

Information

Written Information

- A range of leaflets for local attractions are available in the Information Room.
- Please ask at reception if you have difficulty reading third party leaflets and staff will be happy to read these to you upon request

Customer Care & Support

Booking Procedures

- If you have any specific requirements for your stay please contact the site directly and they will be happy to discuss your requirements and reserve you the most suitable pitch wherever possible.

Evacuation

- There are two assembly points on site, one is at the entrance of the lower field and one is at the visitor parking area, close to reception in the event of an emergency
- Please ask at reception for more details

Customer Care and Staff Training

- All on site staff have received disability awareness and etiquette training.

Public Transport

- There is a bus stop a 10 minute walk from the site, with buses to Winchester and Alresford. Timetables for these buses are displayed in the information room

Taxi

- The site keeps a list of local taxi companies including those offering a wheelchair accessible service where available. This list can be found in the information room